



EXPLOSION PROTECTION

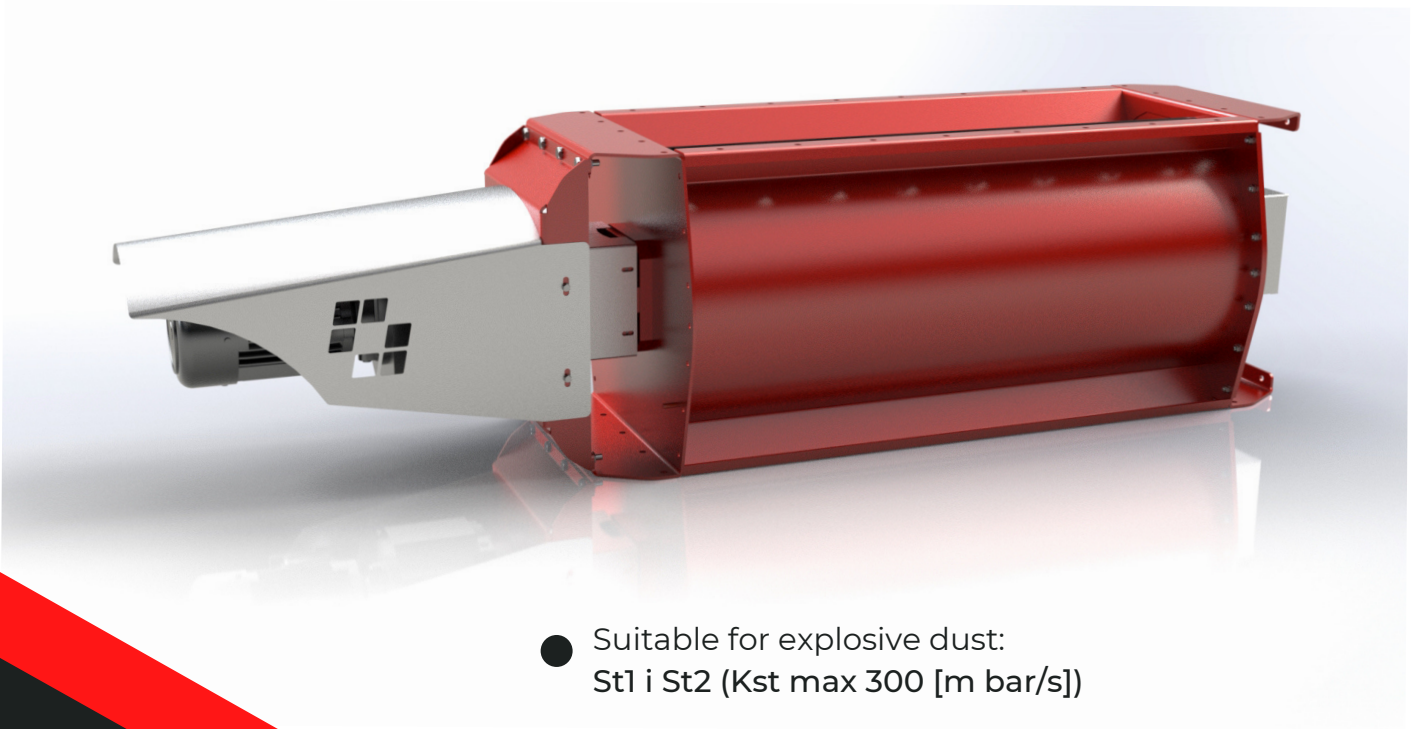
ATEX CERTIFIED FZC-STD ROTARY VALVES

ATEX PROTECTION SYSTEM

EXPLOSION ISOLATION ROTARY VALVES

Rotary valves are used for conveying bulk solids between separate systems and for isolating explosions that might occur inside storage, handling and dedusting systems. Our FZC-STD rotary valves are equipped with a cased rotor propelled by an electric motor with a mechanical transmission. The motor is connected with the transmission with the use of a chain clutch, which enables a mild start of the device.

Our FZC STD rotary valves comply with the essential provisions of the ATEX Directive 2014/34/EU of the European Parliament and of the Council of 26th February 2014 on the harmonisation of the laws of the Member States relating to equipment and protective systems intended for use in potentially explosive atmospheres.



- Suitable for explosive dust:
St1 i St2 (Kst max 300 [m bar/s])
- Resistance/ Reduced explosion pressure:
Pred ≤ 50 kPa



FZC-STD ROTARY VALVES

ATEX PROTECTION SYSTEM

- up to three times higher efficiency when compared to competitive valves available on the market
- 6 mm thick rubber blades made of high strength and abrasive-resistant rubber with additional reinforcement
- wider discharge opening of 350 mm
- welded rotor and reinforced with the use of additional bulkhead connectors
- equipped with a chain clutch
- mild start-up of the device
- long and failure free life of the device
- modular structure enables modular extension
- easy maintenance including replacement of the rubber blades or demounting a motoreducer
- equipped with a protective casing of the motoreducer
- spare parts available from warehouse in Poland



The production process is controlled by the notified body - the Central Mining Institute (No.: 1453) and has been confirmed by the ATEX-Q certificate on quality assurance.

ATEX Q certificate number:
GIG22ATEXQ117



The image shows a formal ATEX Q certificate on quality assurance issued by GIG (Główny Instytut Górnictwa - Central Mining Institute). The certificate is titled 'NOTIFICATION OF QUALITY ASSURANCE' and is for 'Equipment and protective systems intended for use in potentially explosive atmospheres Directive 2014/34/EU'. It includes details such as the Notification Number (GIG 22 ATEXQ117), the Applicant (Filtrwest Sp. z o.o. Sp.k. from Boronja Nowa 131A, 64-300 NOWY TOMYŚL, POLAND), and the Manufacturer (as above). The certificate is dated 23 March, 2022, and is signed by Dariusz Stefanik, PhD Eng. The bottom of the certificate includes contact information for GIG and a page number 'Page 1 / 2'.

FZC-STD ROTARY VALVES

ATEX PROTECTION SYSTEM

TECHNICAL DATA

Rotary valve model	Rotational speed (rot/min)	Motor (kW)	Max theoretical efficiency	Efficiency at 50% load (m3/h)	Weight (kg)
FZC-500-7-STD	21	0,75 lub 1,1	103	52	130
FZC-750-7-STD	21	0,75 lub 1,1	155	78	185
FZC-1000-7-STD	21	1,1; 1,5 lub 2,2	207	103	225
FZC-2000-7-STD	21	1,1; 1,5 lub 2,2	414	206	420
FZC-3000-7-STD	21	1,1; 1,5 lub 2,2	621	309	600

► Our rotary valves FZC STD work as ATEX explosion isolation system and are certified by a notified body No.: 1453, Central Mining Institute - GIG, Mikołów, Poland.

The EU type examination certificate number: KDB20ATEX0053



KDBEX

EU TYPE EXAMINATION CERTIFICATE

[1] Protective equipment and systems intended for use in potentially explosive atmospheres. Directive 2014/34/EU (Rozporządzenie Ministra Rozwoju z dnia 06.06.2016r. Dz.U. z dnia 09.06.2016r. Poz. 817).

[2] EU type examination certificate (module B): **KDB 20ATEX0053** 0 edition

[3] Equipment / Protective system: **Rotary valve type FZC-- 7-STD*-***

[4] Manufacturer: **FILTRONET Sp. z o.o. Sp.K.**

[5] Address: **Borujka Nowa 131A, 64-306 Borujka Nowa**

[6] The protective equipment or system and any acceptable variations thereto are specified in the schedule to this certificate.

[7] Central Mining Institute, Notified Body no 1453 according to Directive 2014/34/EU of February 26, 2014, approves that the protective equipment or system specified in this certificate has been found to comply with the essential health and safety requirements for the design and construction of protective equipment and systems intended for use in potentially explosive atmosphere given in Annex II to Directive 2014/34/EU (Załącznik nr 2 Rozporządzenia Ministra Rozwoju z dnia 06.06.2016r. Dz.U. z dnia 09.06.2016r. Poz. 817). The results of the assessment and examinations as well as the list of agreed documentation are recorded in the confidential Report **KDB No 20.085 [T-7664]**

[8] The essential health and safety requirements have been met by compliance with the requirements of the following standards: **EN 15089:2009; EN ISO 80079-36:2016; EN ISO 80079-37:2016**

[9] If sign "X" is placed after the certificate number, this means the specific conditions of use set out in the schedule to this certificate.

[10] This EU type examination certificate relates only to the construction, assessment and testing of the specified product in accordance with Directive 2014/34/EU (Załącznik nr 2 Rozporządzenia Ministra Rozwoju z dnia 06.06.2016r. Dz.U. z dnia 09.06.2016r. Poz. 817). The certificate shall not cover the remaining requirements of the Directive regarding the manufacturing process and placing the protective equipment or system on the market.

[11] The marking of the equipment: Details of marking are given in point 15.

Date of issue: **21 December 2020**

Page 1 of 5

Główny Instytut Górnictwa
Jednostka Oceny Zgodności
KIEROWNIK ZESPÓŁU
inż. Andrzej Wójcikowski
ATEX Certification Expert

Główny Instytut Górnictwa
K I E W O W N I K
jednostka oceny zgodności
dr inż. Dariusz Stefanik

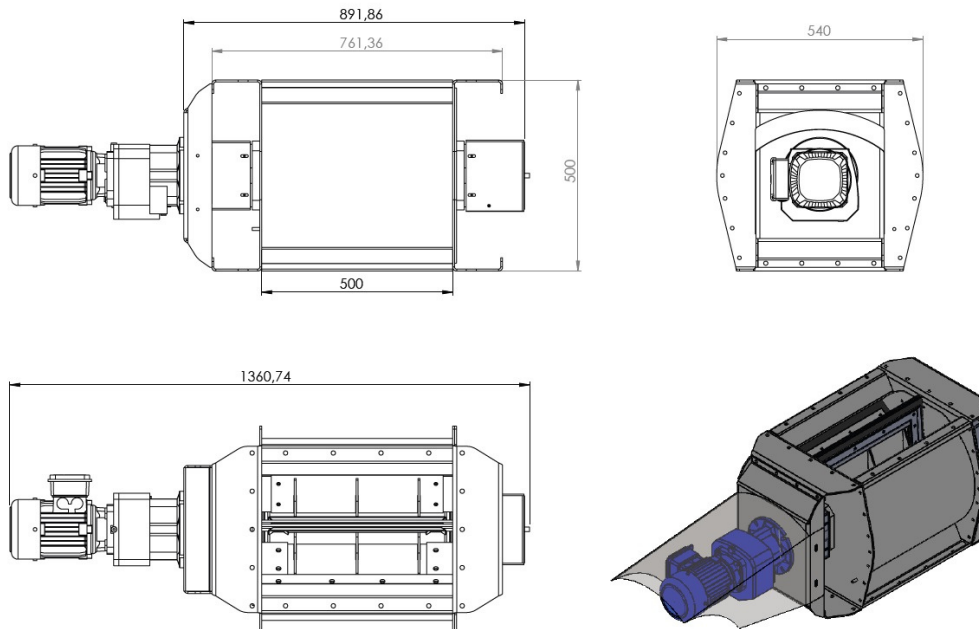
Główny Instytut Górnictwa, 40-166 Katowice, Plac Gwarków 1, Polska, www.gig.eu
Jednostka Oceny Zgodności, 43-100 Mikołów, ul. Podolska 12, www.gigcert.com
Certification Body accredited by PCA (Polski Centrum for Accreditation), No AC038.
This certificate may only be reproduced in its entirety together with schedules. The document without signatures and stamps shall be not valid.
© 2020 GIG-Instytut Górnictwa

FZC-STD ROTARY VALVES

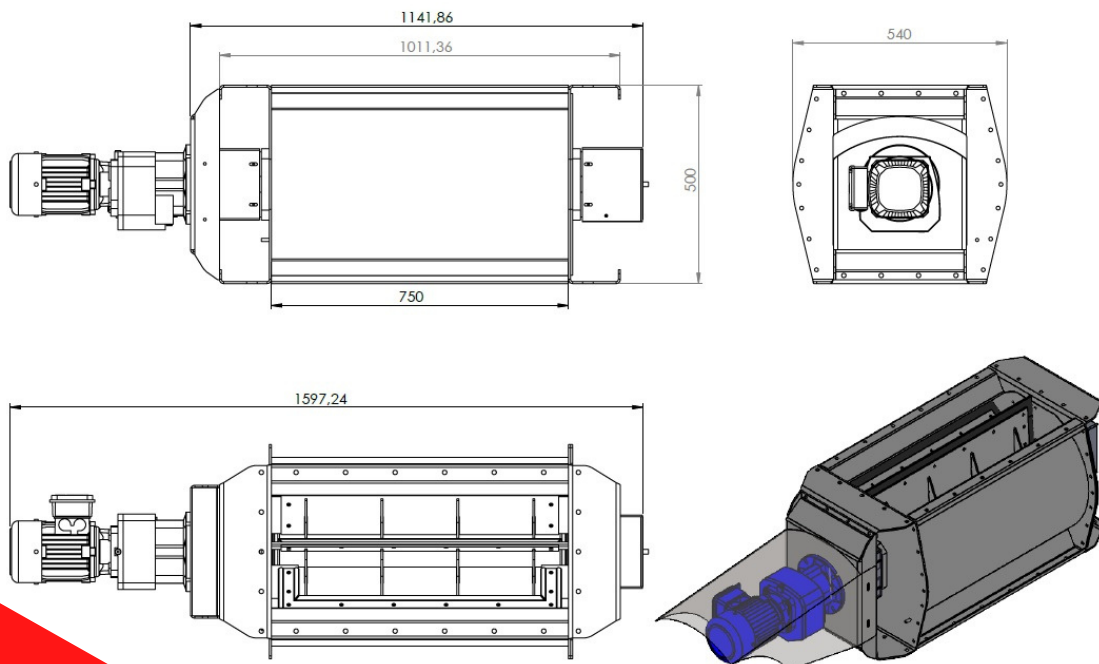
ATEX PROTECTION SYSTEM

DIMENSIONS

- FZC-500-7-STD



- FZC-750-7-STD

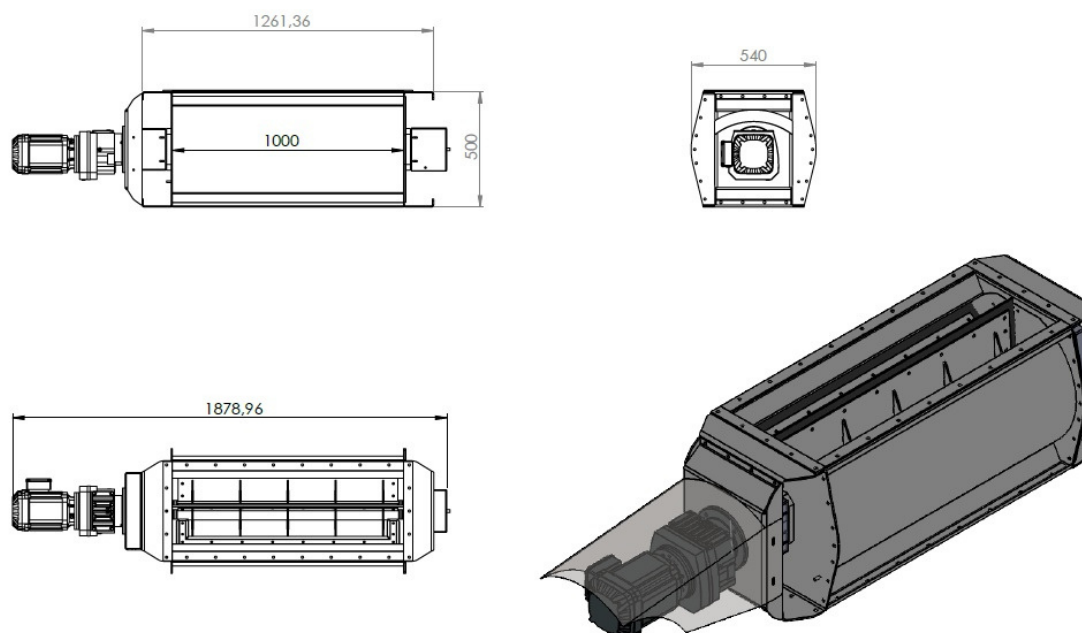


FZC-STD ROTARY VALVES

ATEX PROTECTION SYSTEM

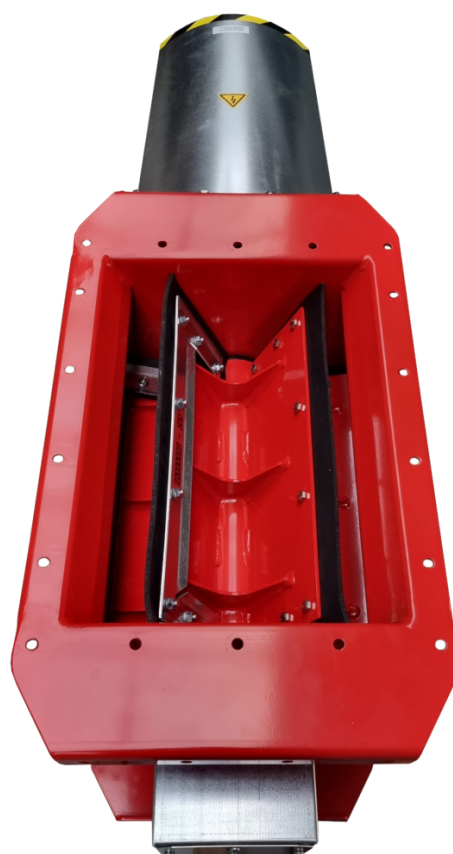
DIMENSIONS

- FZC-1000-7-STD



MARKING

- St2 II 1/-D Ex h IIIB T125stC Da/-
- St2 II 1/2D Ex h IIIB T125stC Da/Db
- St2 II 1/3D Ex h IIIB T125stC Da/Dc
- St2 II 2/-D Ex h IIIB T100stC Db/-
- St2 II 2D Ex h IIIB T125stC Db
- St2 II 2/3D Ex h IIIB T125stC Db/Dc



ATEX PROTECTION SYSTEMS

- explosion isolation rotary valves
- venting panels
- explosion isolation flap valves
- flameless explosion venting
- explosion venting deflectors
- explosion diverters